

LENTO

A RETREAT BY THE SEA

SAN DOMINO, TREMITI ISLANDS



Lento boutique hotel in San Domino Island embraces quiet luxury and a deep understanding of Italian tourism, Puglia's distinct character, and the evolving concept of modern luxury. This renovation seamlessly combines the past and future, balancing local heritage with contemporary, sustainable design that respects the natural environment.

In recent years, Puglia's tourism has surged, highlighting the need to preserve traditional ways of life. The region's appeal lies in its historic architecture, rugged coastline, and ancient olive groves. As tourism evolves, projects like Lento aim to enhance these authentic features, grounding new developments in the genius loci and prioritizing environmental consciousness. Here, a luxury hospitality experience is redefined with simplicity, authenticity, and connection to nature.

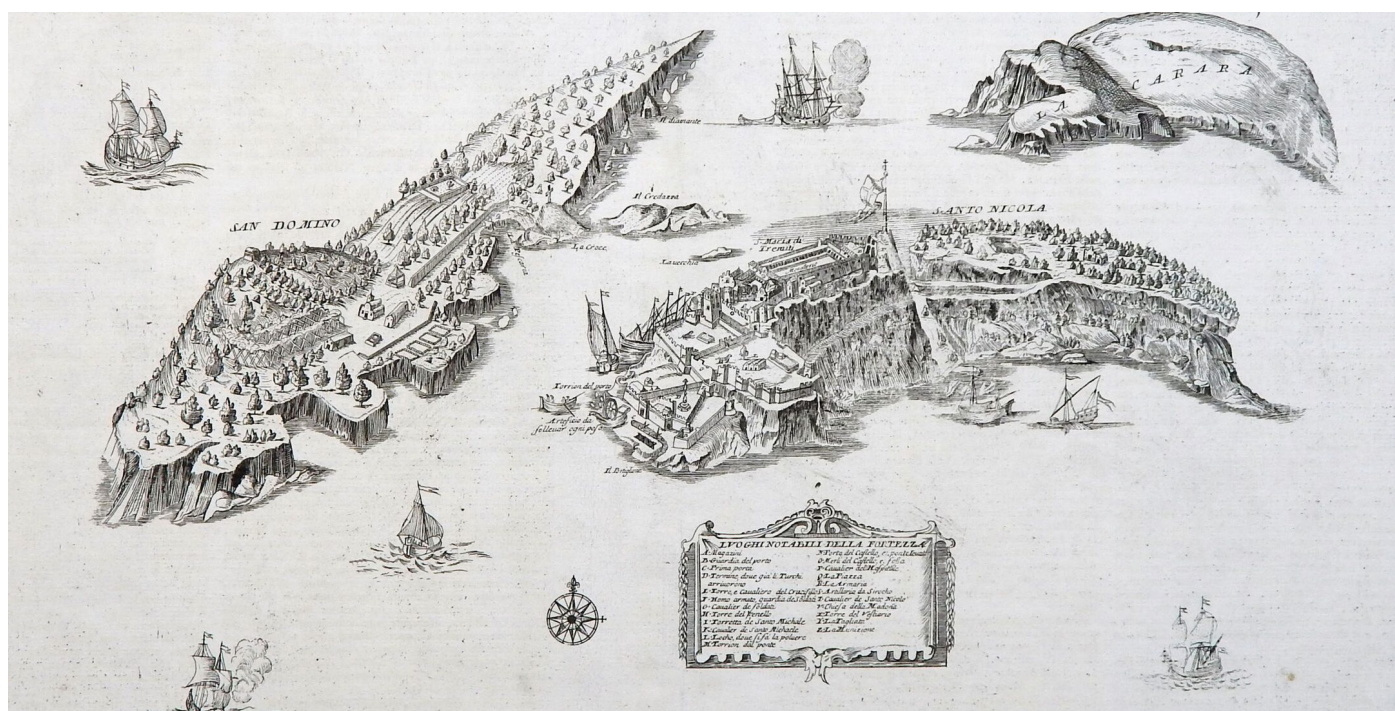
Lento embodies this understated elegance, offering an immersive experience rooted in craftsmanship and timeless design. It honors San Domino's history while integrating modern comforts, using local materials like Trani stone and wood to create a harmonious blend of tradition and innovation. Trani stone, with its warm hues, reflects Puglia's sunlit landscapes, symbolizing permanence. In contrast, wood introduces warmth and adaptability, mirroring the traditional Trabucchi fishing structures along the coast.

The design is a balanced interplay between the enduring quality of stone and the flexibility of wood, capturing both timeless elegance and modern adaptability. The interiors feature natural materials and a deconstructed style that celebrates raw beauty and authenticity, aligning with the broader landscape.

Lento invites guests to reconnect with nature, focusing on sensory experiences that highlight the rugged Adriatic coastline. The hotel design maximizes natural views, with windows framing the sea, allowing guests to breathe in the salty air, feel the warmth of the sun, and listen to the waves. Earthy tones and craftsmanship throughout the hotel evoke a deep sense of place, creating a visual and tactile continuity with the surrounding environment.

The guest suites, conceived as private retreats, feature darker tones, intimate wooden interiors, and luxurious, locally crafted furniture. The windows flood the spaces with light, reinforcing the connection to the outdoors. Beyond the suites, the communal lounge and dining areas offer spaces for relaxation, while the outdoor garden, with its untamed myrtle and rosemary, and the upper terrace provide serene spots for yoga, meditation, or dining under the stars.

Lento at the lighthouse sets a new standard of luxury, one rooted in sustainability and local context. By using regional materials, respecting the landscape, and focusing on lasting quality, it offers a timeless experience where past and present coexist, allowing guests to rediscover the simple pleasures of life in one of Italy's most captivating regions.



Exclusive hospitality and timeless comfort

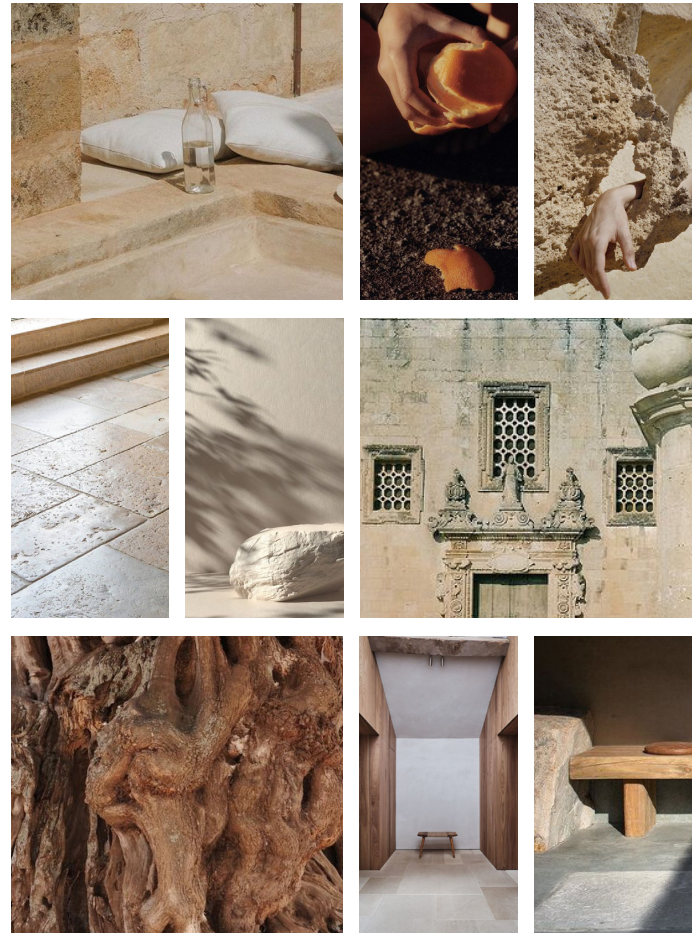
The concept of Lento captures the essence of Mediterranean architecture and lifestyle: a celebration of light, nature, craftsmanship, and the simple joys of life. The lighthouse design is rooted around the idea of blending with the environment using the senses in order to let travelers connect with the context and with themselves.

Inside, neutral earthy tones and tactile materials like toned woods, stone surfaces and lime plasters create a connection to the island's rugged coastline, in a calm timeless aesthetic. Handcrafted and bespoke furniture reflect a Mediterranean authentic luxury rooted in millennia of tradition and inherited skills.

Living spaces are designed for both social gathering and relaxation, featuring plush seating and conversation pits that evoke the convivial spirit of *dolce vita*, where enjoying good food and leisurely moments is a way of life.

Outdoors, an infinity pool overlooks the Adriatic Sea, framed by native bushes of *macchia mediterranea*, offering a fragrant, natural retreat. Here, light toned materials and essential design invites clients to foster a slow paced rhythm and enjoying the surroundings. An *orto* in the garden provides fresh, seasonal ingredients for a bespoke Km0 cooking service, ensuring meals are as local and authentic as possible.

At night, the project reveals a new facet of its design. The lighting strategy draws inspiration from the original structure of the lantern, echoing the essence of the lighthouse. Darkened brass lighting elements are scattered around the outdoor areas providing a warm ambient glow. Two lantern frames the infinity pool and the reflection of the moon in the adriatic sea while floorlights gently illuminate the lush vegetation from below. Indoors, a diffuse, warm atmosphere mimics the sunlit glow, creating a cozy, inviting environment that transitions seamlessly from day to night. Guests are welcomed with an exclusive transfer service from the harbor to the lighthouse entryway, ensuring a smooth and elegant arrival to this extraordinary retreat.



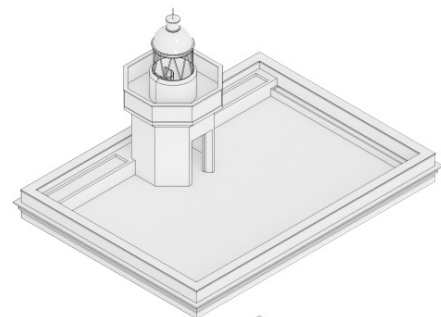
THE DESIGN

Historical preservation and functionality

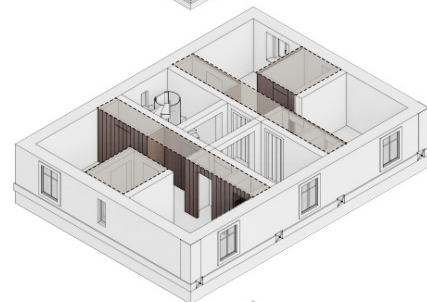
The design of the San Domino lighthouse project adheres to a clear, respectful strategy: preserving the integrity of the original structure while introducing new elements in a seamless and complementary manner. The pre-existing spatial layout, the lantern, iconic window perspectives and original materials are maintained, ensuring that the building's historic character and its connection to the surrounding landscape remain untouched.

The new volumes are designed as distinct additions, aligning with the original architectural axis, preserving the flow of light and views throughout the interior. These new facilities, including guest bathrooms and staff areas, are thoughtfully placed to enhance functionality without disrupting the existing structure. Public and private bathroom entrances follow the building's established axis, while staff facilities are discreetly positioned on the east side of the ground floor, ensuring privacy for guests and efficient service operations. Utility shafts are stacked vertically for a streamlined layout, reducing structural impact and preserving the building's integrity.

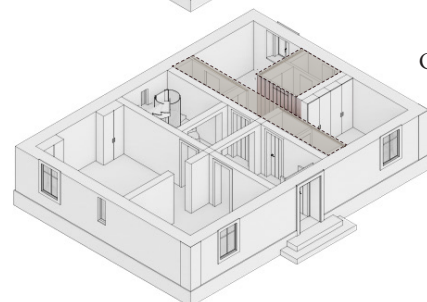
The added volumes are clad in light-toned wood on the ground floor, transitioning to darker tones on the first floor to create a sense of intimacy. This material choice provides a warm contrast to the Trani stone of the original lighthouse, which reflects the historical significance and timeless elegance of the building. Inside, the cladding features earthy, dark hues inspired by the surrounding olive groves. The use of textured lime plaster and fabric creates a tactile, sensory-rich atmosphere that enhances the connection to the natural landscape.



Rooftop



First floor



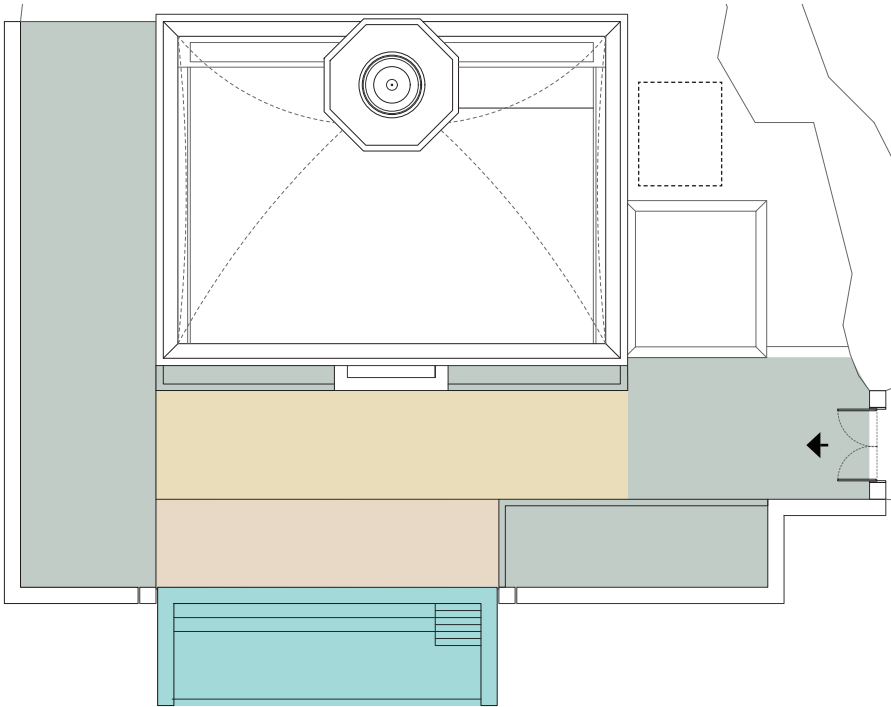
Groundfloor

ARRIVAL OUTDOOR AREA

Guest garden and infinity pool

65246

Functions diagram

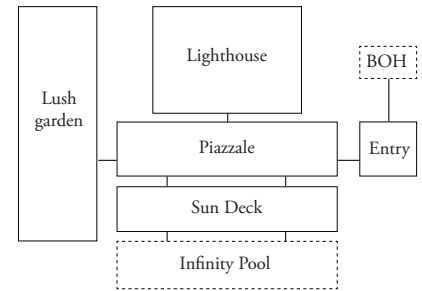


Data

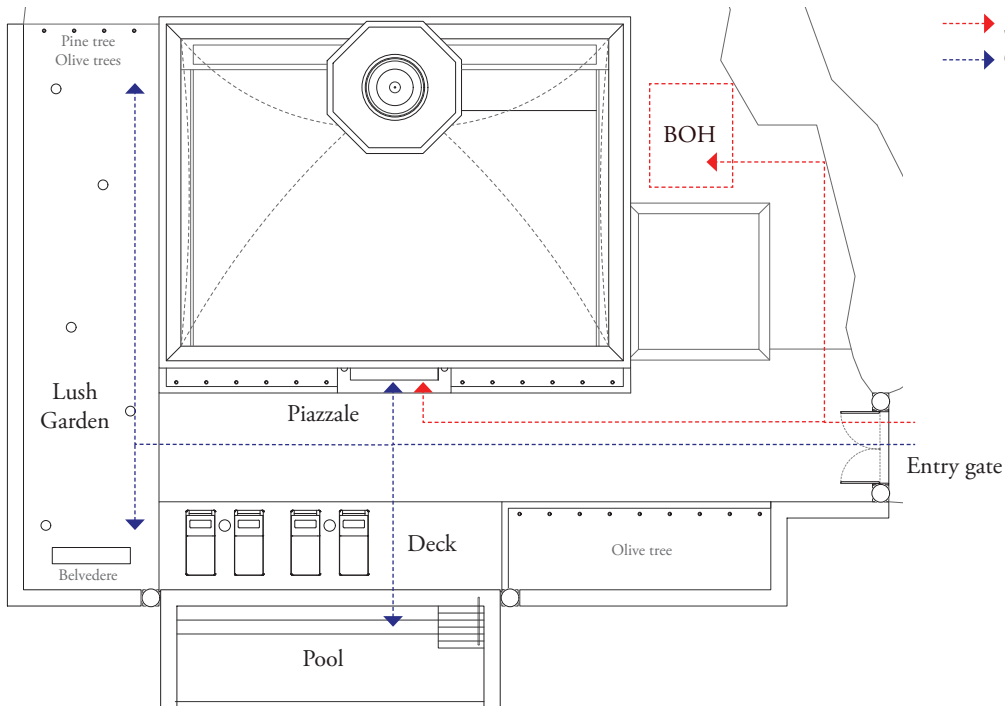
Material Tag

Landscaped Green - 135 m ²	FL - 03
Paved Piazzale - 42 m ²	FL - 01
Paved sun deck - 32 m ²	FL - 02
Infinity pool - 35 m ²	FL - 01
Back Of House	

Distribution scheme

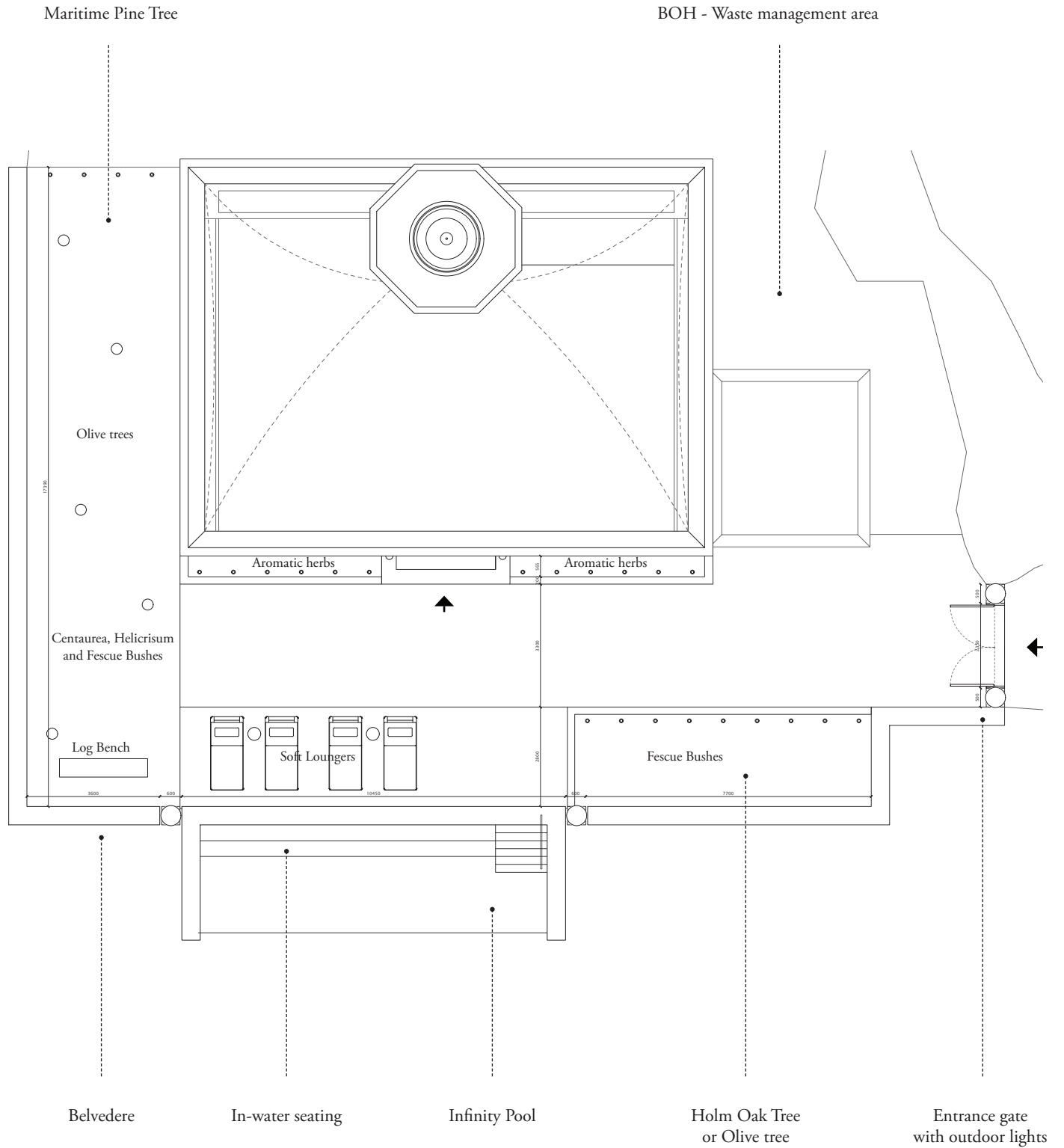


Circulation diagram



Program brief :

- Outdoor plaza
- Infinity Pool
- Carefully selected vegetation

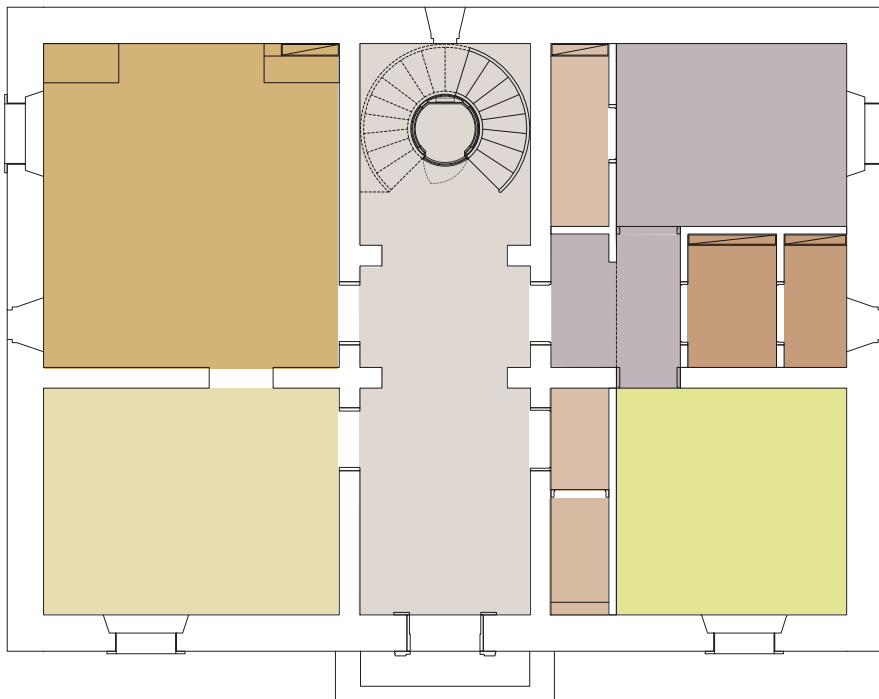


GROUND FLOOR

Guest common spaces and staff area

65246

Functions diagram

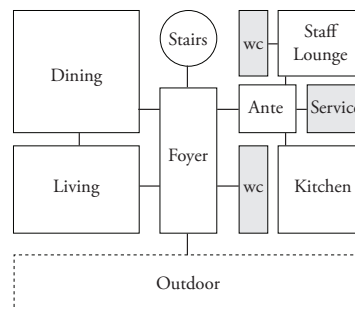


Data

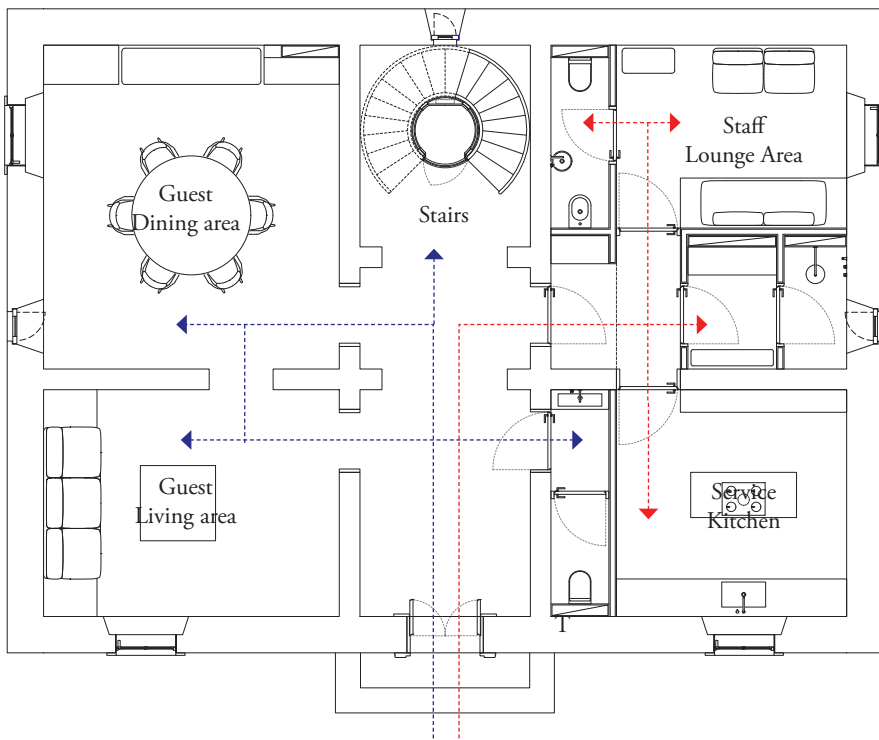
Material Tag

Foyer - 24 m ²	FL - 05
Living Area - 18 m ²	FL - 05
Dining Area - 25 m ²	FL - 05
Staff Area - 16 m ²	FL - 05
Service Kitchen - 13 m ²	FL - 05
Changing room - 2,7 + 3,5 m ²	FL - 06
Washrooms - 5,3 m ²	FL - 06

Distribution scheme

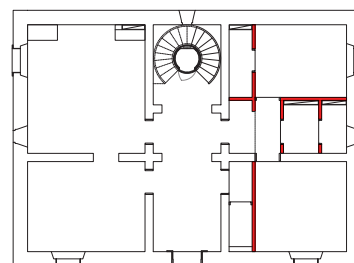


Circulation diagram

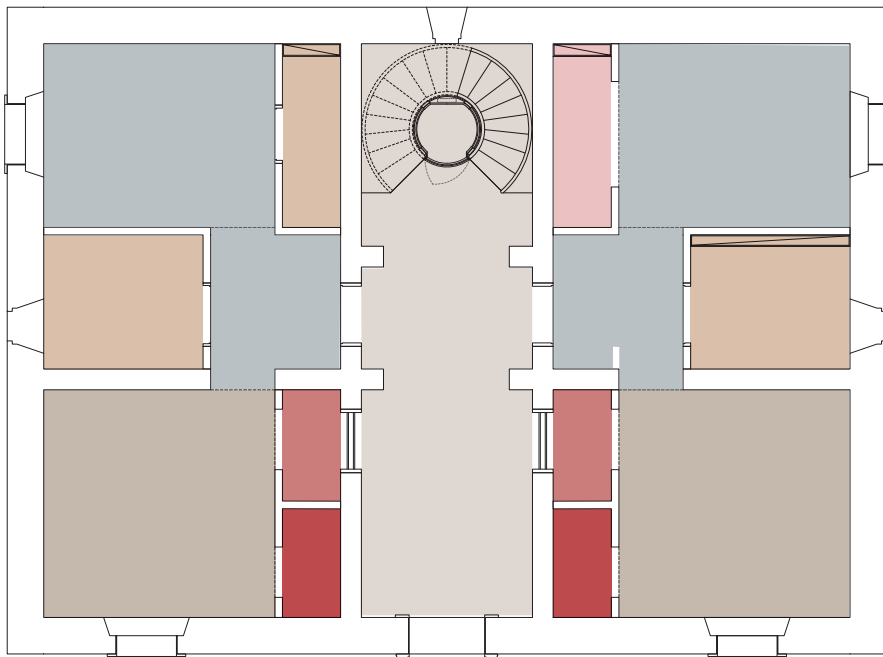


- Staff Circulation
- Guest Circulation

Built dry walls



Functions diagram

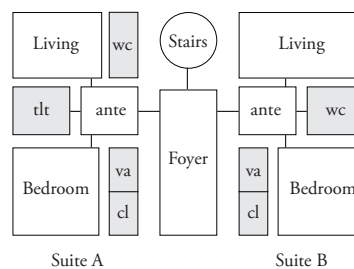


Data

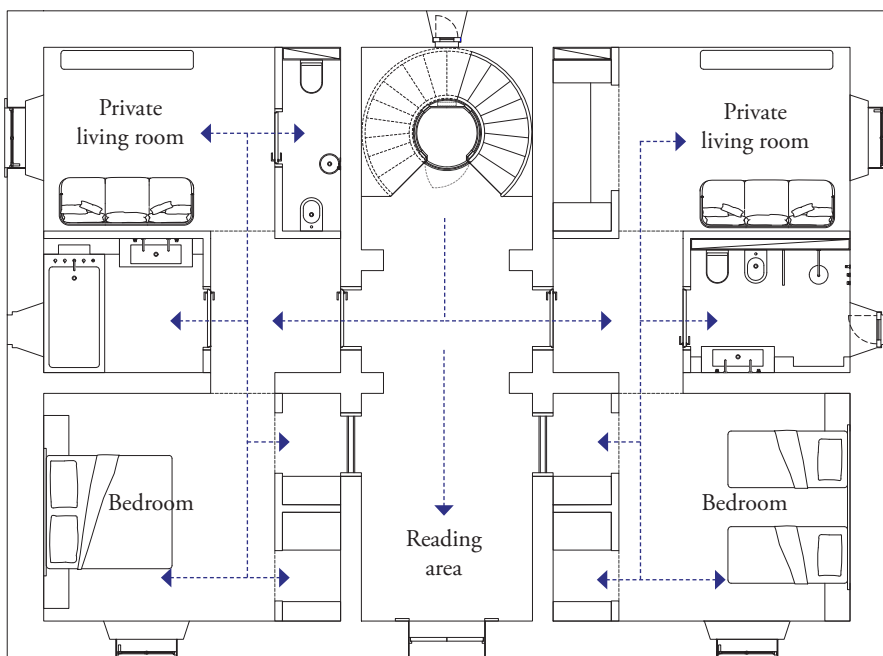
Material Tag

	Foyer and Reading area - 24 m ²	FL - 05
	Private Living room - 15+15 m ²	FL - 05
	Double Bedroom - 13,6+13,6 m ²	FL - 05
	Washrooms/Toilets - 8+5,3 m ²	FL - 06
	Dry vanity area - 1,7+1,7 m ²	Carpet
	Walk-in Closet - 1,7+1,7 m ²	Carpet
	Studio - 2,7 m ²	Carpet

Distribution scheme

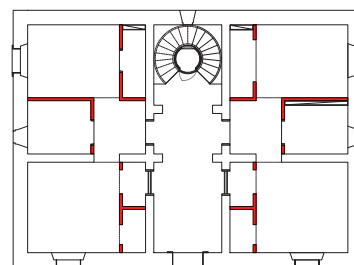


Circulation diagram



.....> Guest Circulation

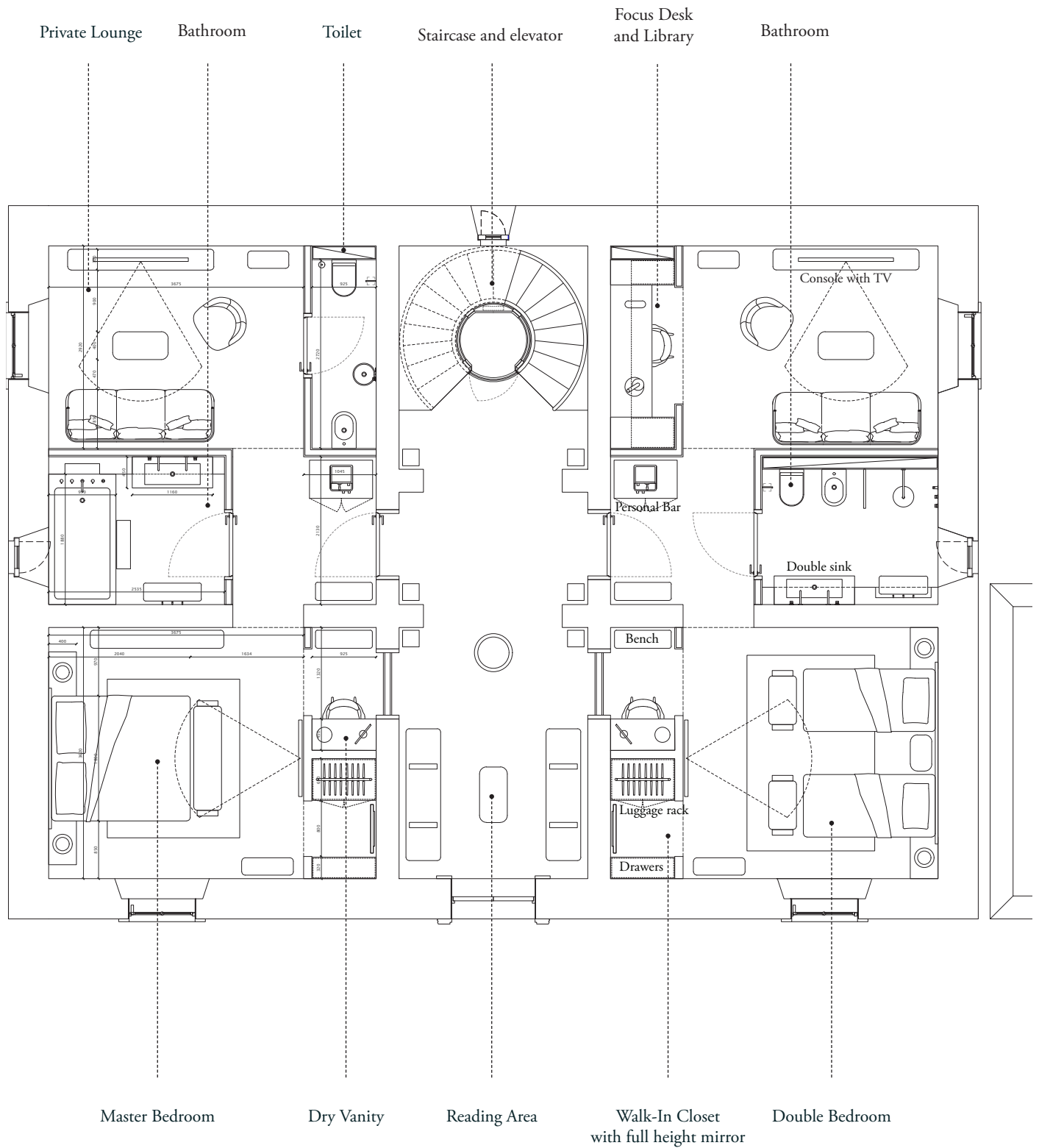
Built dry walls



Program brief :

Large high-end suites
Lounge private area
Double bedroom
Spacious bathroom

65246



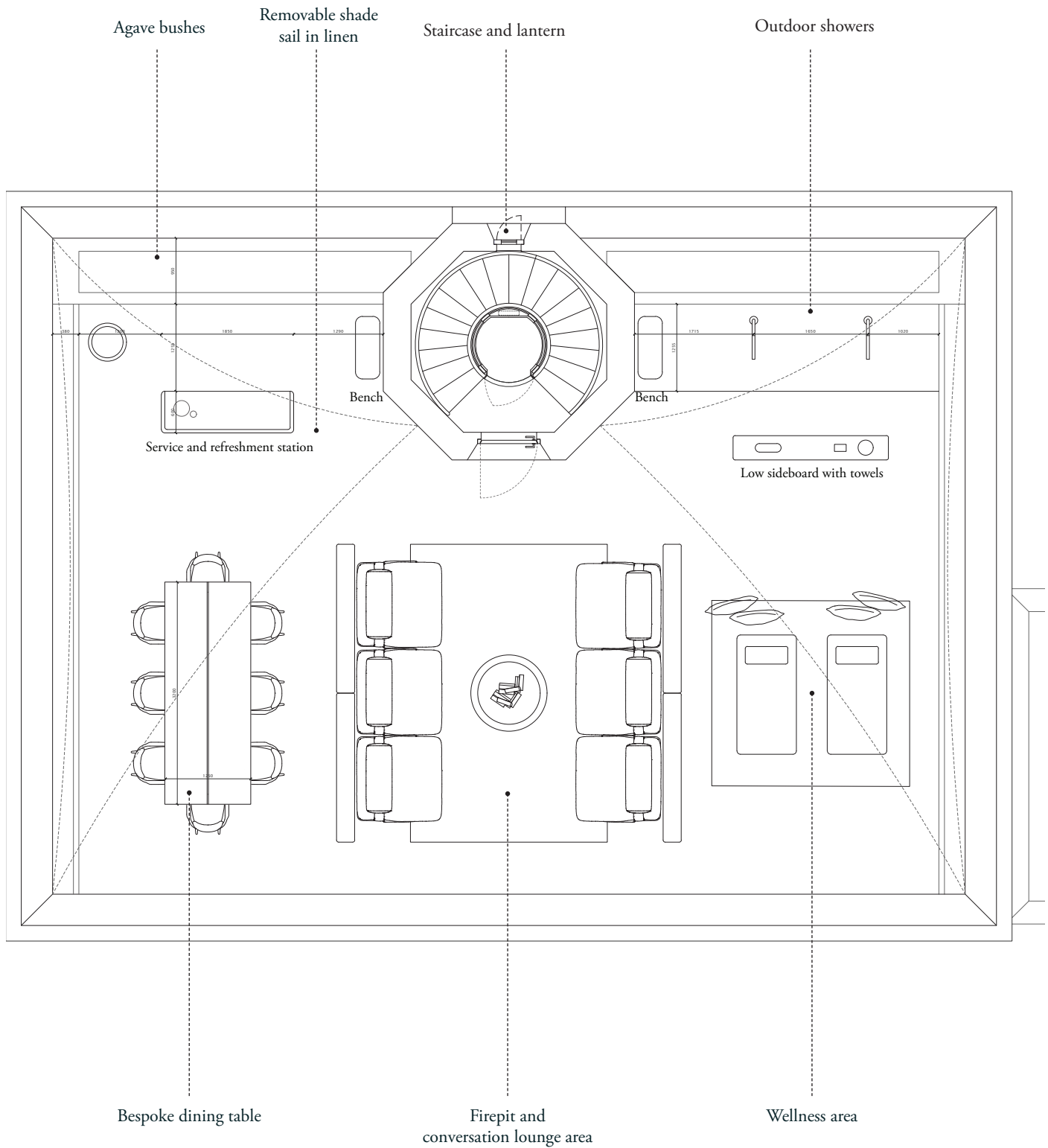
ROOFTOP

Guest terrace

65246

Program brief :

- Relaxing atmosphere
- Panorama
- Shadowed areas



NOTE : The rooftop furniture is movable to allow flexibility of the space for special events.

Sustainability and regulations

_ Lento is designed in accordance to Legislative Decree 22 January 2004, n. 42. and the Testo Unico dell' Edilizia, following ergonomics, hygienical and sustainable rules.

_ Materic finishings and landscape vegetation design are chosen in accordance to the preexisting built and natural context of the Tremiti natural reserve, considering the origin of the vegetation species and the **sustainability, durability and duration in time** of the materials.

_ Stone and terracotta tiles must be used in all the outdoor and surfaces. All exterior material finishes must be exceptionally durable, designed to withstand the challenges of extreme weather conditions as well as prolonged exposure to salt and water.

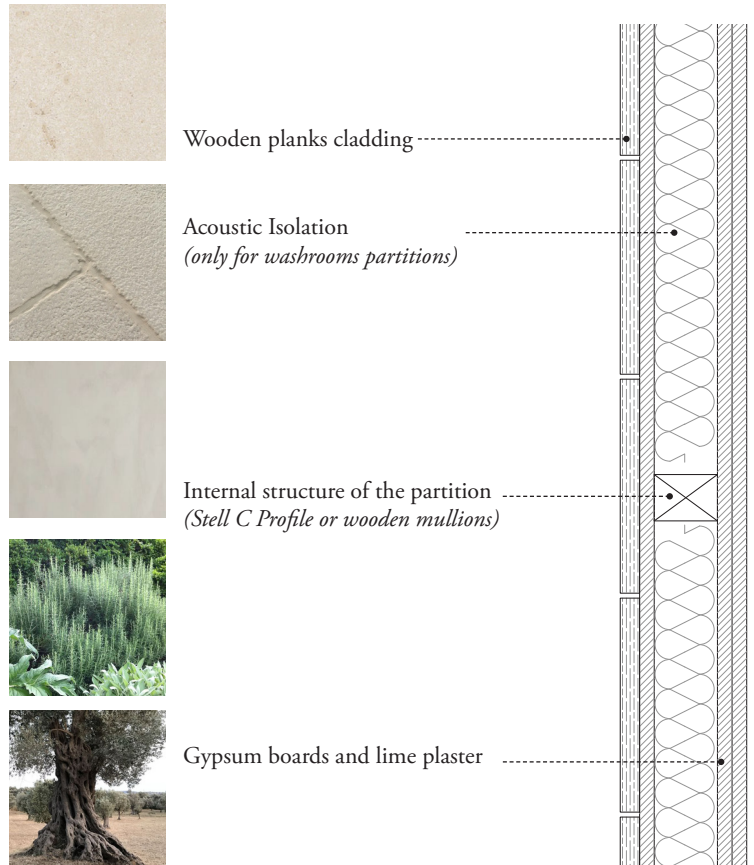
_ Trani stone, tiles, wooden claddings and handcrafted furniture will be mandatory sourced by local companies and carpenters for sustainability and price affordability.

_ All the finishes, outdoor and indoor, will be confirmed, in progress, in accordance with the supervisor of the Superintendence of Cultural Heritage.

_ As per Superintendence condition, the new partitions are built as gypsum drywalls, with the addition of acoustic isolation where needed - see detail on the right.

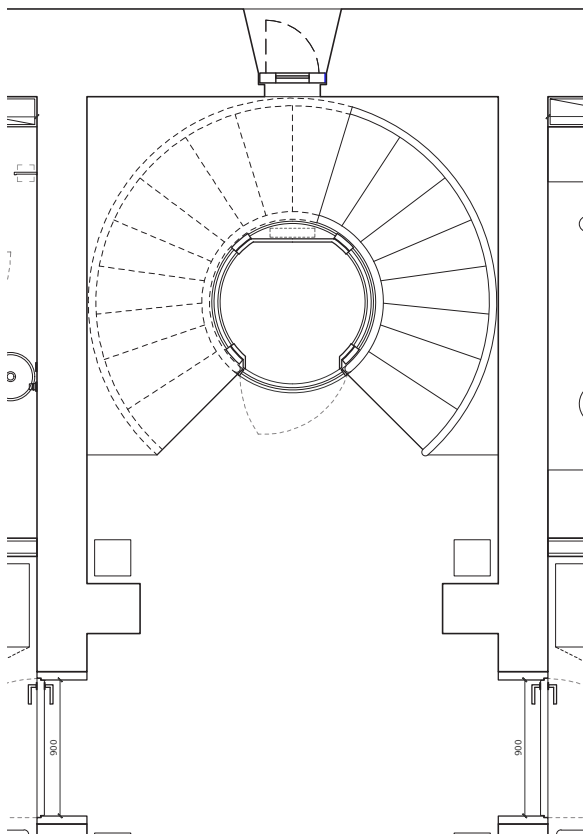
_ The next design phase will focus on resource and renewable energy management, including rainwater collection, ecological wastewater treatment, and integrating solar panels or small wind turbines to reduce environmental impact and future costs.

Gypsum walls construction detail - Horizontal section

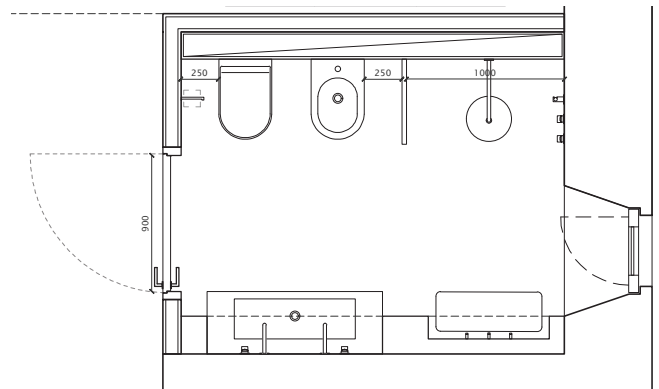


Accessibility

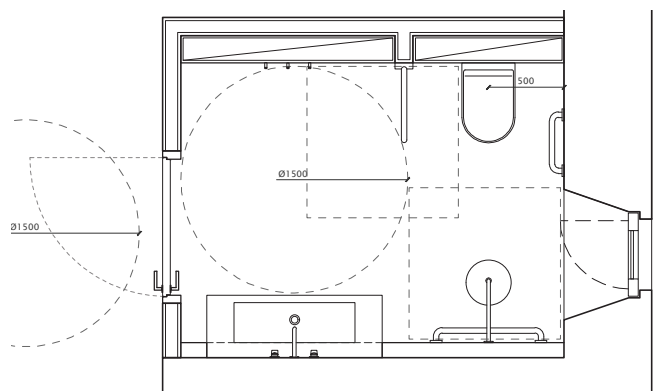
Elevator and Existing staircase



Suite B private bathroom - Current Layout

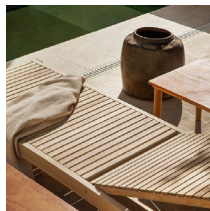
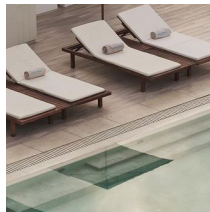
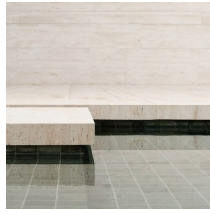


Suite B private bathroom - possible ADA Layout

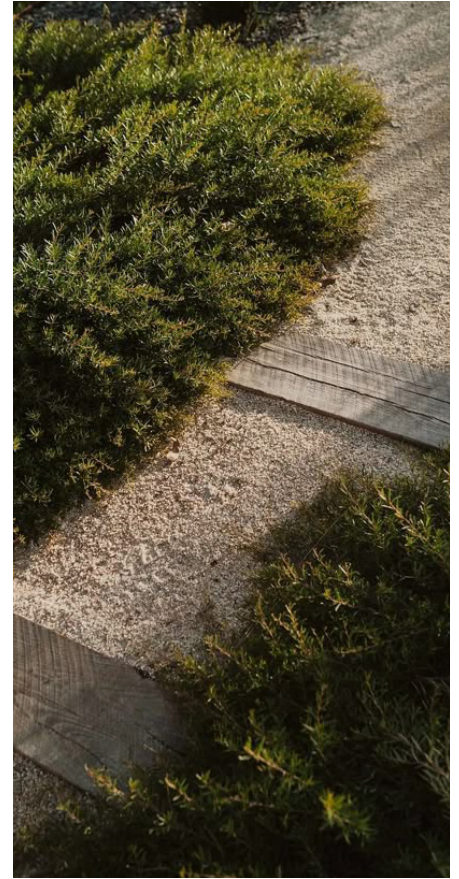
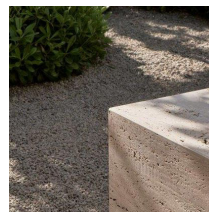
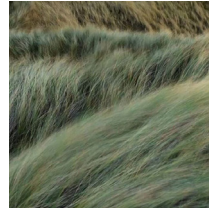


MOODBOARD OUTDOOR ARRIVAL AREA

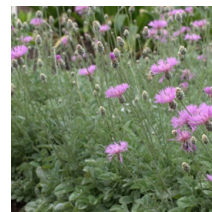
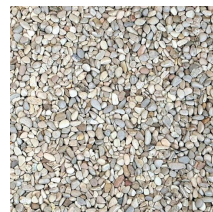
Mood and references Piazzale



Mood and references Garden



Finishes and Vegetation



Natural Biancone
FL-01

Bush Hammered Stone
FL-02

Grey and red pebbles
FL-03

Fescue

Centaurea

Rosmarinus Officinalis

Furniture



Kettal Mesh Deckchair



Bespoke side table



Light tone movable parasol umbrellas

NOTE : All the outdoor finishes must be approved by the Superintendence of Cultural Heritage.

Axonometric view - Pool entry

Bush Hammered Stone - *FL 02*

Loungers - *Kettal Mesh Deckchair*

Holm Oak tree - *Quercus Ilex*
or Olive Tree - *Olea Europaea*

Bespoke outdoor light

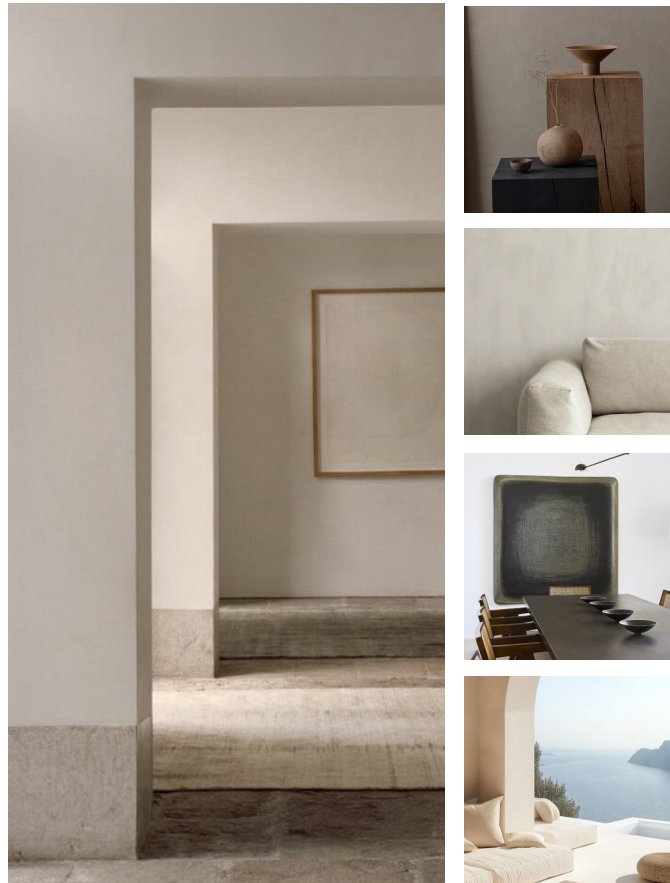


Infinity Pool view



MOODBOARD GROUND FLOOR

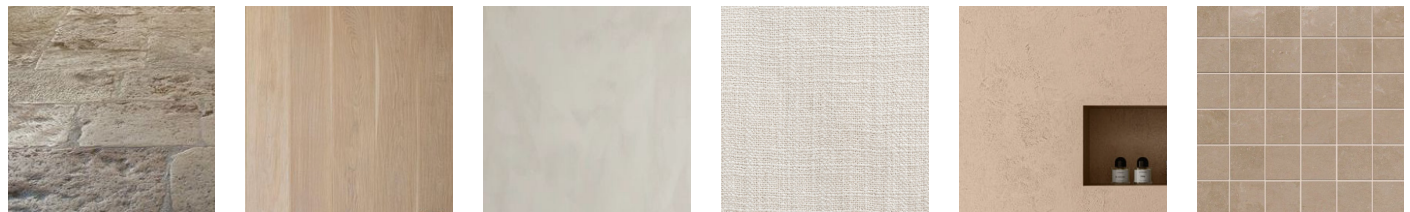
Mood and references Guest Area



Mood and references Service Area



Finishes



Natural Trani Stone
FL - 05

Light tone wood
WO - 01

Plaster
PA - 01

Dedar - Hugo
TX - 01

Lime Finish
PA - 02

Terracotta tiles
FL - 06

Furniture



Soft lounge chair

Bespoke stone coffee table

Bespoke locally crafted dining chairs

NOTE : All the indoor plaster and lime finishes must be approved by the Superintendence of Cultural Heritage.

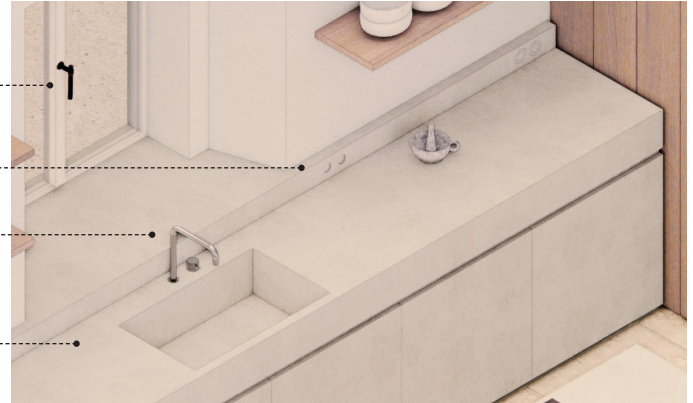
Axonomic view - Kitchen

Blackened metal window handle

Socket - *Concealed bespoke PLH Italia*

Kitchen fixture - *Inox 409 QuadroDesign*
Brushed Stainless Steel

Local stone finish

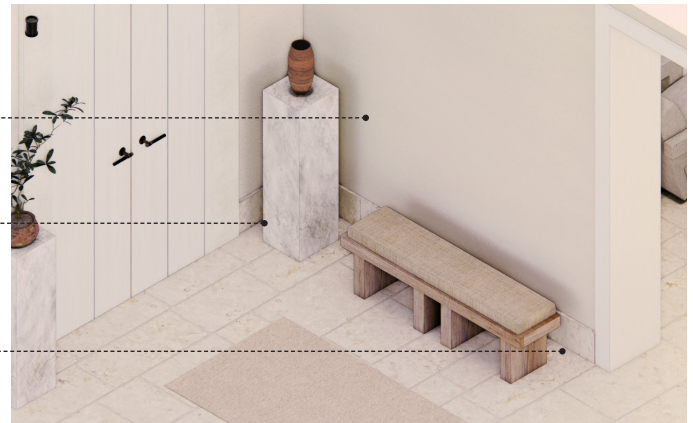


Axonomic view - Arrival

Wall Plaster according to Code - *PA-01*

Local bespoke stone podium

Natural trani Stone skirting and flooring - *FL-05*



Living room view

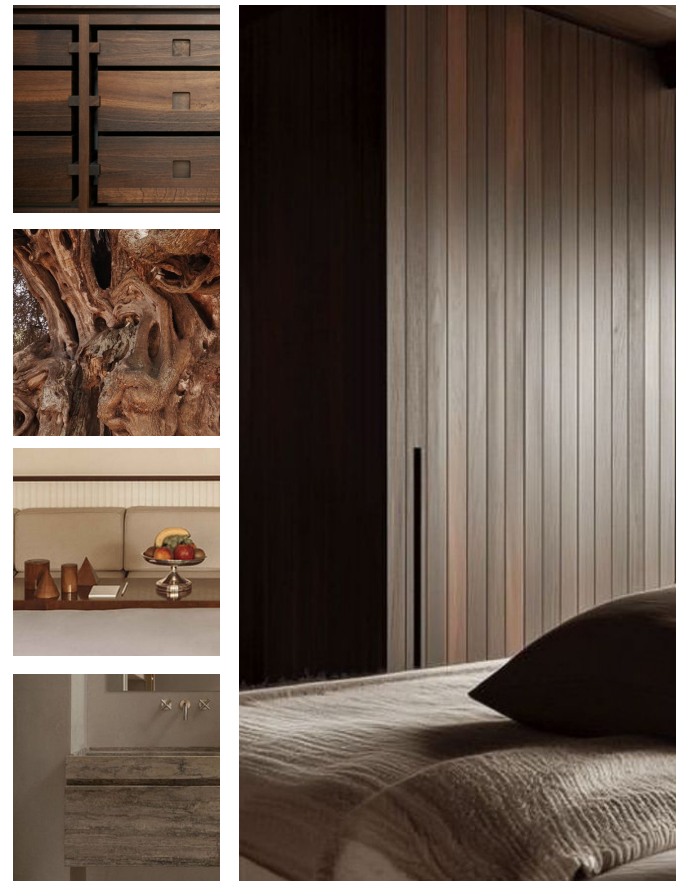


MOODBOARD FIRST FLOOR

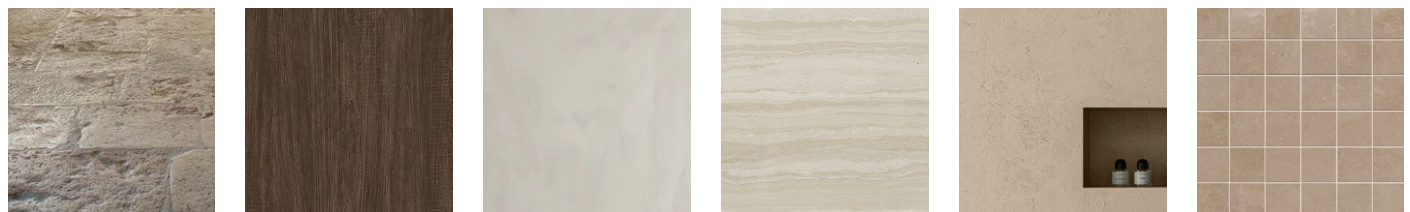
Mood and references Bedroom and private Living



Mood and references Facilities



Finishes



Natural Trani Stone
FL - 05

Dark tone wood
WO - 02

Plaster
PA - 01

Serpeggiante Apricena

Lime Finish
PA - 02

Terracotta tiles
FL - 06

Furniture



Soft sofa

Bespoke handcrafted bench

Soft linen sheers and Blackout curtains

NOTE : All the indoor plaster and lime finishes must be approved by the Superintendence of Cultural Heritage.

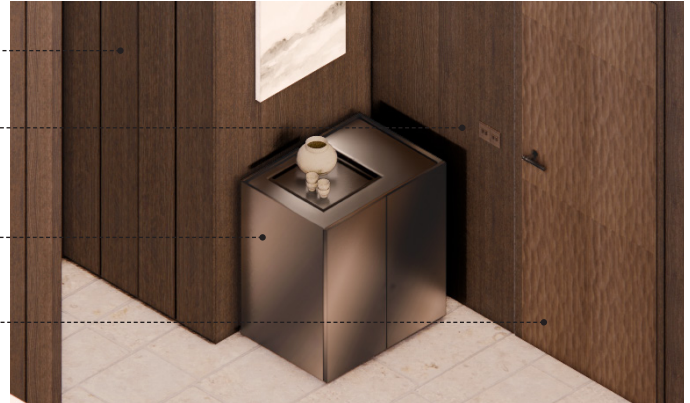
Axometric view - Entrance

Dark tone wood planks - *WO-02*

Socket - *Bespoke brass Skin PLH Italia*

Bespoke local produced personal bar

Bush hammered wooden door with blackened metal handle



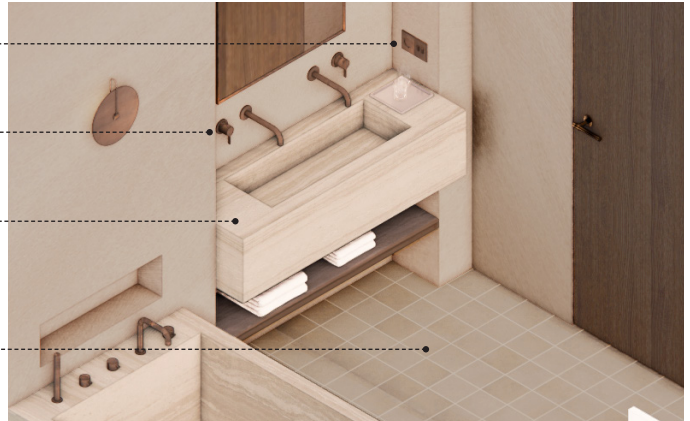
Axometric view - Washroom

Socket - *Bespoke brass Skin PLH Italia*

Bathroom Fixtures - *Volcano QuadroDesign*

Serpeggiante di Apricena Stone

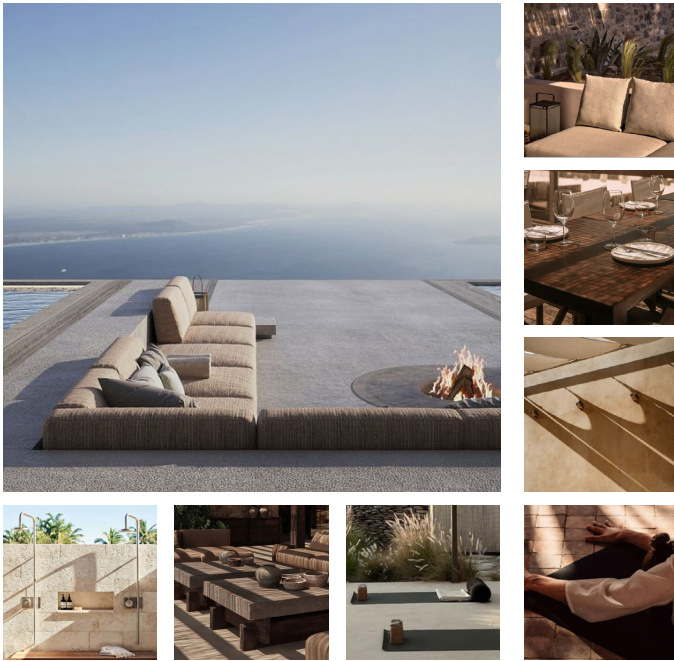
Locally produced terracotta tiles - *FL-06*



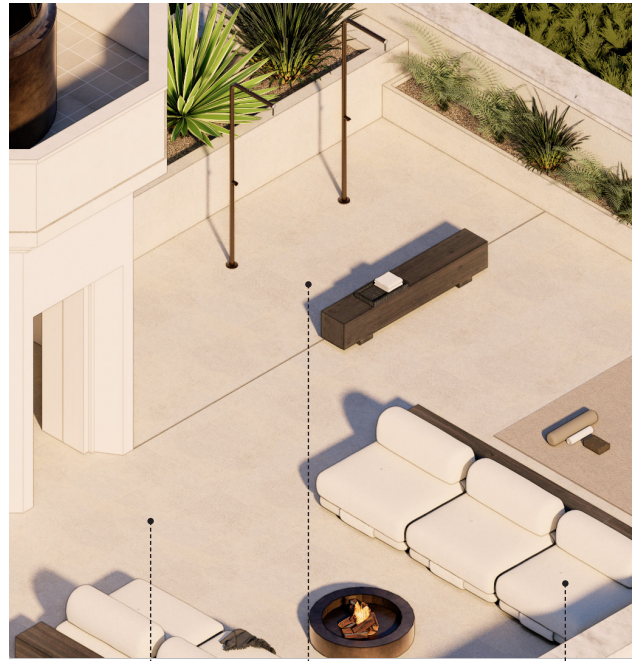
Suite A bedroom view



Mood and references



Axonomic view - Outdoor Firepit and shower area



Bush hammered Stone - FL-02

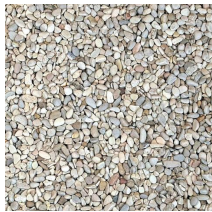
Outdoor shower - Collection Q QuadroDesign

Firepit lounge - Insula modular Sofa Kettal

Finishes



Bush Hammered Stone
FL - 02



Pebbles
FL - 03



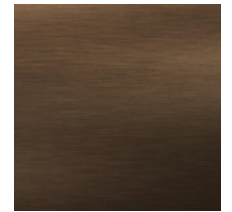
Plaster
PA - 01



Kettal - Tonale Boucle
TX - 02



Dark tone wood
WO - 03



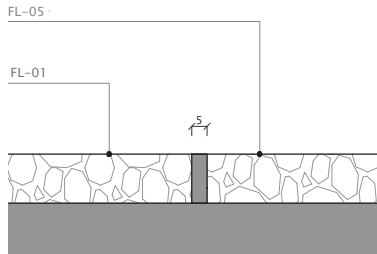
Darkened brass

Rooftop terrace view

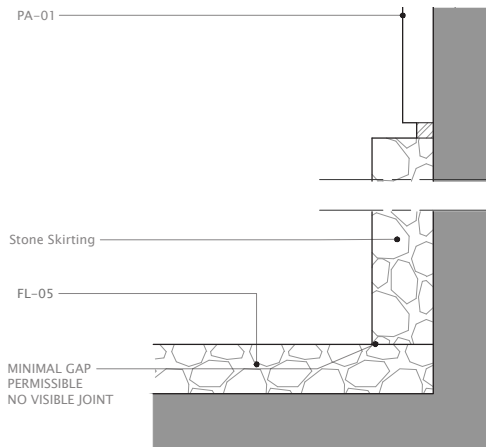


Stone Floor detail

Stone - stone horizontal section

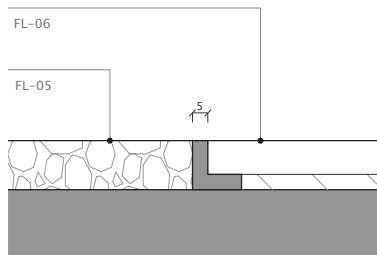


Stone skirting vertical section

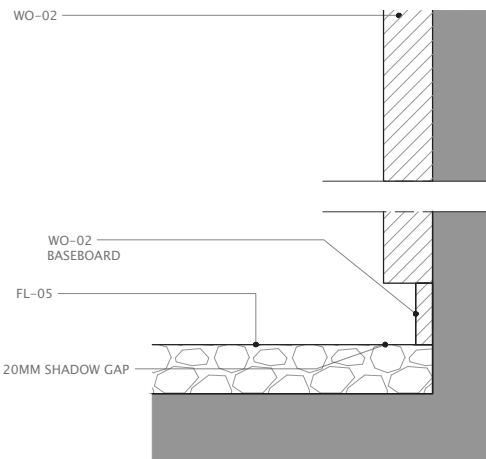


Stone-Tiles and Stone-Wood detail

Stone - tiles horizontal section

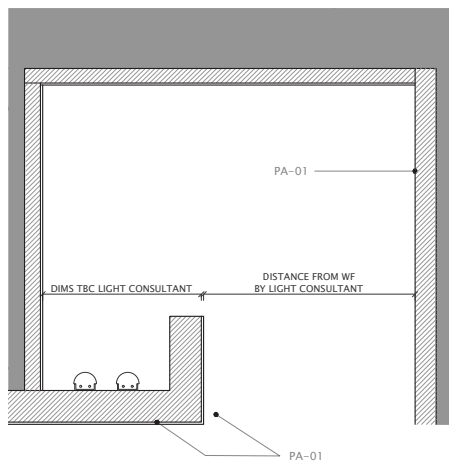


Stone- wood vertical section

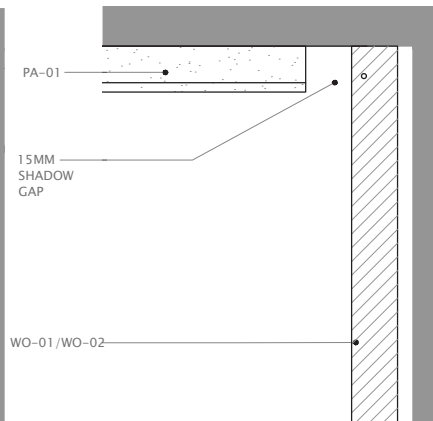


Ceiling detail

Cove light vertical section



Wood - Plaster vertical section



Outdoor lighting plan



The lighting design for Lento draws inspiration from its history as a lighthouse, making it a central in the concept of creating a serene and elegant ambiance. In the original lighthouse, nighttime revolved around the glowing lantern and the moon's reflection on the sea. Reflecting this heritage, darkened brass lighting fixtures are thoughtfully placed throughout the outdoor areas, casting a warm, ambient glow. Two lanterns gracefully frame the infinity pool, while subtle floor lights softly highlight the lush vegetation. Indoors, a diffuse, warm light evokes the gentle glow of sunlight, creating a cozy and inviting atmosphere that seamlessly shifts from day to night.

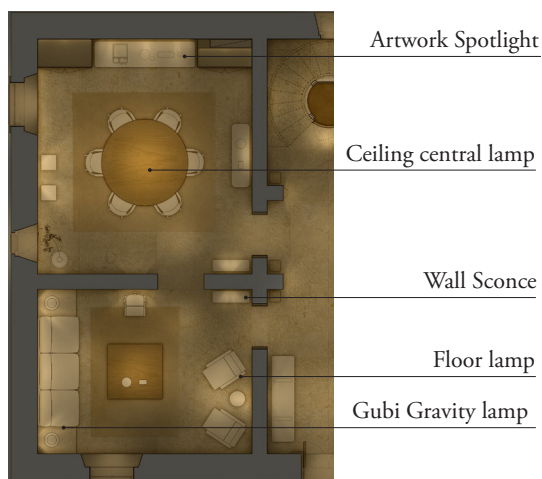
Indoor and outdoor bespoke lights

The light design draw inspiration from the original structure of the lanterna.

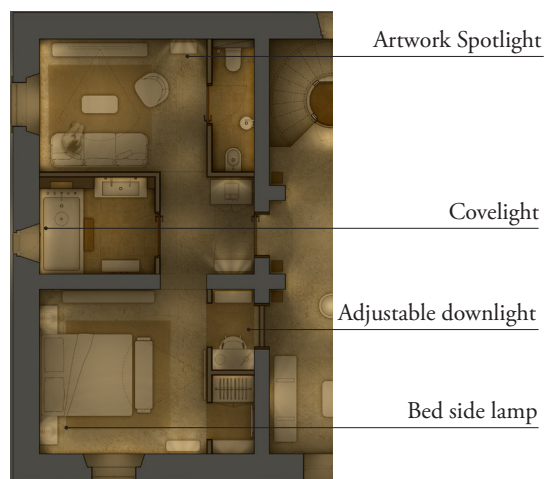


Sconce Bedside lamp Outdoor light Fireplace

Groundfloor lighting plan



Suite A lighting plan



NOTE : The lighting design will be further coordinate with the Lighting Consultant.